

In order to get Kopete works with yahoo messenger since yahoo changed the authentication recently causing Ubuntu 8.04 and KDE 3.5 with Kopete is no longer working. see <http://mattr.info:8080/blog/2009/06/24/kopete-and-yahoo/>

1. Upgrade 8.04 Hardy/KDE 3.5 -> 8.10 Intrepid ->9.04 Jaunty/KDE 4.2 in order to Kopete to work with YM

<http://www.ubuntugeek.com/upgrade-ubuntu-804-hardy-heron-to-ubuntu-810-intrepid-ibix.html>

It is easy to upgrade using internet

8.04 ->System->Software sources-> Updated changed to Normal Release

8.04 ->System->Update Manager -> See New Distribution release 8.10 -> Click upgrade

It will finish in ½ hour it will have 8.10 Release then do again

8.09 ->System->Update Manager -> See New Distribution release 9.04 -> Click upgrade

It will finish in ½ hour it will have 9.10 then OS is done only upgrade KDE 4.2 to 4.3

Note: Enabled third party update before Upgraded.

- **Upgrade KDE 4.3**

<http://aminesoft.wordpress.com/2009/08/20/howto-install-kde-4-3-on-kubuntuubuntu-jaunty/>

<http://ubuntuforums.org/showthread.php?t=1195820>

<http://tips4linux.com/install-kde-43-in-ubuntu-jaunty/>

<http://ubuntuforums.org/showthread.php?t=1231466>

Here's how to install the newly-release KDE 4.3 in Ubuntu Jaunty.

Open up your sources.list file:

sudo gedit /etc/apt/sources.list

add the following line at the bottom of the file:

deb http://ppa.launchpad.net/kubuntu-ppa/backports/ubuntu jaunty main

Save the file and do a

sudo apt-get update && sudo apt-get dist-upgrade

(sudo apt-get install kubuntu-desktop will do)

(sudo aptitude update)

(sudo apt-get update && sudo apt-get install medibuntu-keyring && sudo apt-get update)

Reading package lists... Done

Reading package lists... Done

Building dependency tree

Reading state information... Done

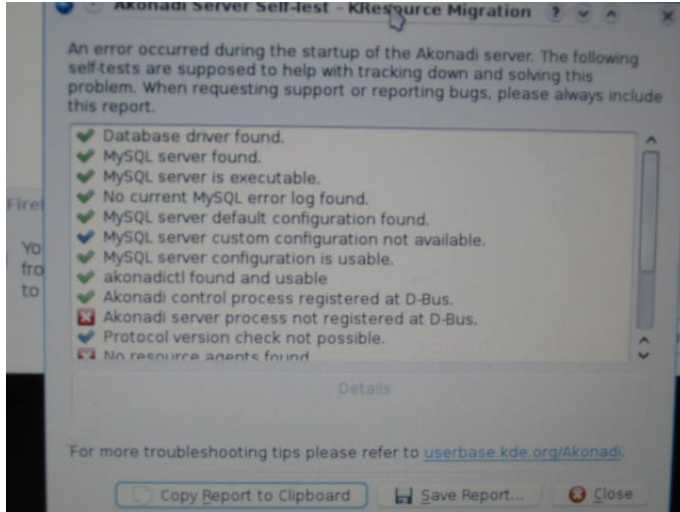
You might want to run `apt-get -f install' to correct these.

The following packages have unmet dependencies:

kdebase-workspace-bin: Depends: kdebase-workspace-data (= 4:4.2.2-0ubuntu2) but 4:4.3.2-0ubuntu1~ppa1~jaunty1 is installed

Recommends: dontzap but it is not installed

E: Unmet dependencies. Try using -f.



Akonadi Server Error.

From Synaptic, choose Edit>Fix broken packages.. KDE will hang if switch GNOME runs Synaptic will go filter then broken. But it will show a lot relating. Follows below.
Reboot: sudo halt or sudo shutdown -h now or sudo reboot

```
tovantran@tovantran-laptop:~$ sudo apt-get install -f
```

```
Do you want to continue [Y/n]? y
```

```
(Reading database ... y185632 files and directories currently installed.)
```

```
Preparing to replace kdebase-workspace-bin 4:4.2.2-0ubuntu2 (using .../kdebase-workspace-bin_4%3a4.3.2-0ubuntu1~ppa1~jaunty1_i386.deb) ...
```

```
Unpacking replacement kdebase-workspace-bin ...
```

```
dpkg: error processing /var/cache/apt/archives/kdebase-workspace-bin_4%3a4.3.2-0ubuntu1~ppa1~jaunty1_i386.deb (--unpack):
```

```
trying to overwrite /usr/lib/kconf_update_bin/plasma-add-shortcut-to-menu', which is also in package kde-window-manager
```

```
dpkg-deb: subprocess paste killed by signal (Broken pipe)
```

```
Errors were encountered while processing:
```

```
/var/cache/apt/archives/kdebase-workspace-bin_4%3a4.3.2-0ubuntu1~ppa1~jaunty1_i386.deb
```

```
E: Sub-process /usr/bin/dpkg returned an error code (1)
```

```
Fixed: http://kubuntuforums.net/forums/index.php?topic=3101546
```

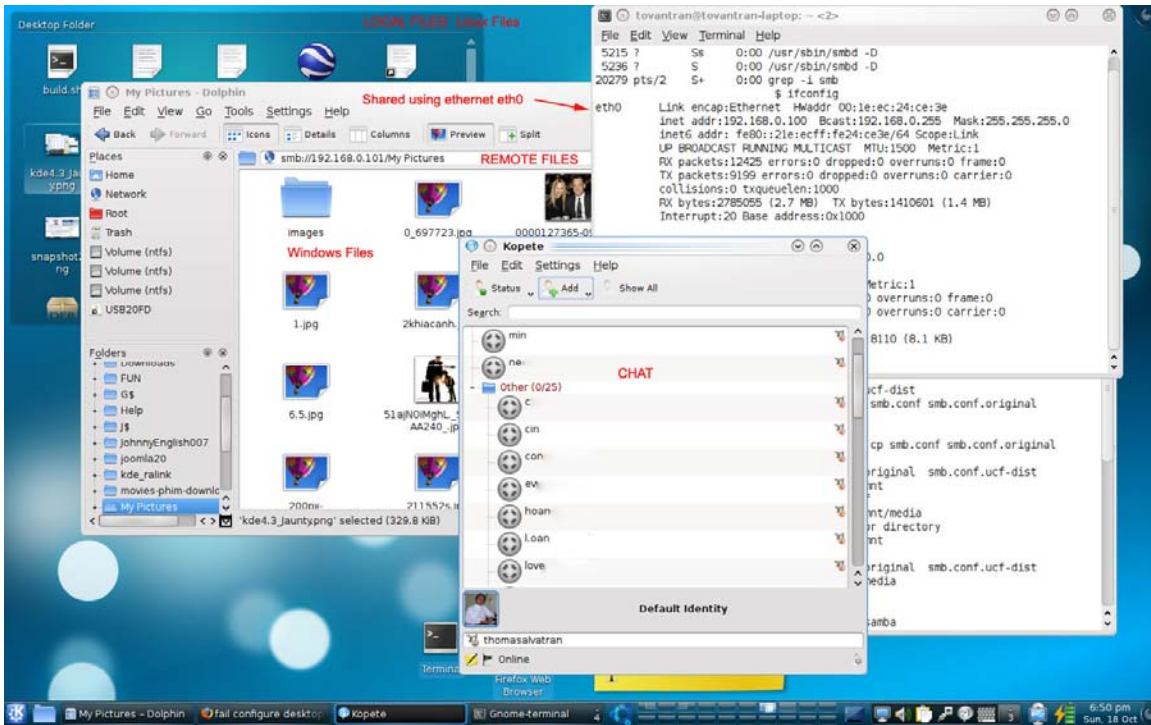
```
sudo dpkg -i --force-overwrite  
/var/cache/apt/archives/kdebase-workspace-bin_4%3a4.3.2-0ubuntu1~ppa1~jaunty1_i386.deb
```

That then allowed me to use apt-get -f install to install the rest of the packages and continue with the rest of the update. So I now have 4.2 working. See <http://kubuntuforums.net/forums/index.php?topic=3101546>

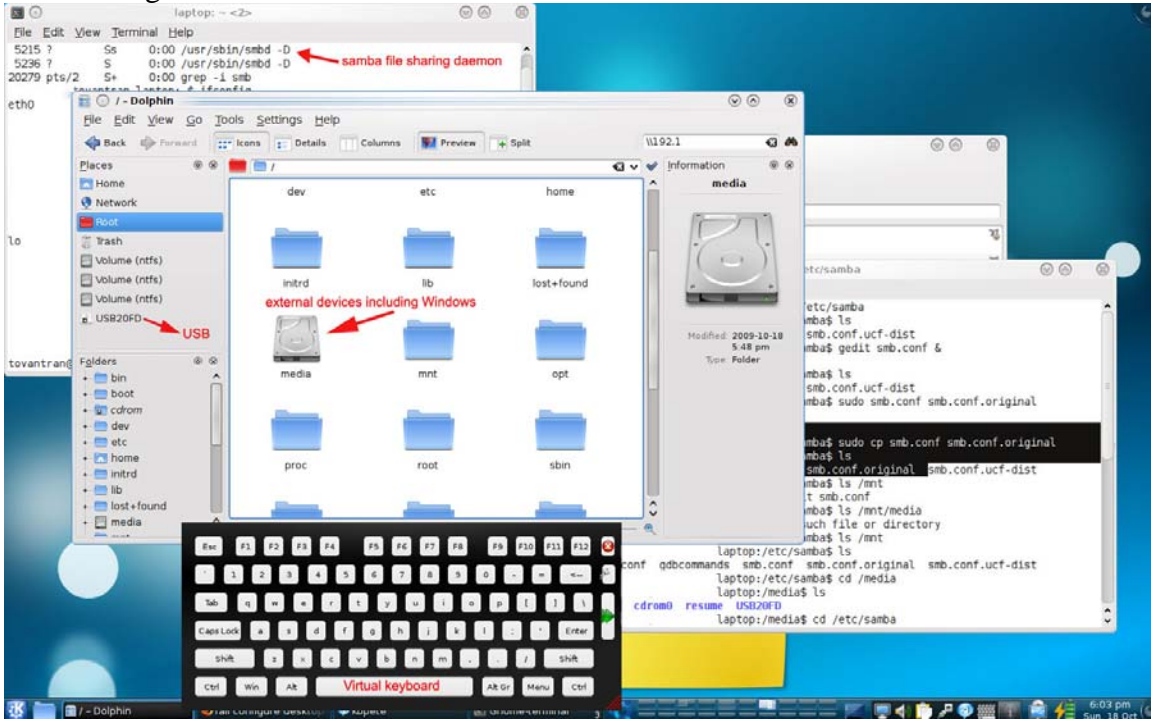
How To Remove KDE 4.3 from 9.04 & going back to KDE 4.2.4

<http://forumubuntu.com/viewtopic.php?f=7&t=3581>

Chat.



File Sharing.



Virtual Keyboard is handy to surf the net with wireless mouse.

2. SAMBA: Files sharing between Windows and Linux

<http://www.pcmech.com/article/file-sharing-using-ubuntu-904-and-samba/>

sudo apt-get install samba

sudo /etc/init.d/samba restart (smbd process)

testparm (test samba for errors)

Problems:

Sharing between Windows and Linux using Samba

- Firestarter need to be disabled so XP can see Ubuntu, firestarter is a firewall and it prevents to see ubuntu/linux by default ubuntu/linux no firewall

- It could be interfaces: wire or wireless using ifconfig to find out

sudo gedit /etc/samba/smb.conf

interfaces = lo eth0

check workgroup to match windows XP

workgroup = WORKGROUP

Mount Samba:

sudo mkdir joomla20

sudo smbmount //192.168.0.100/joomla20 /media/joomla20

laptop1:/media\$ cd joomla20

laptop1:/media/joomla20\$ ls -ld /media

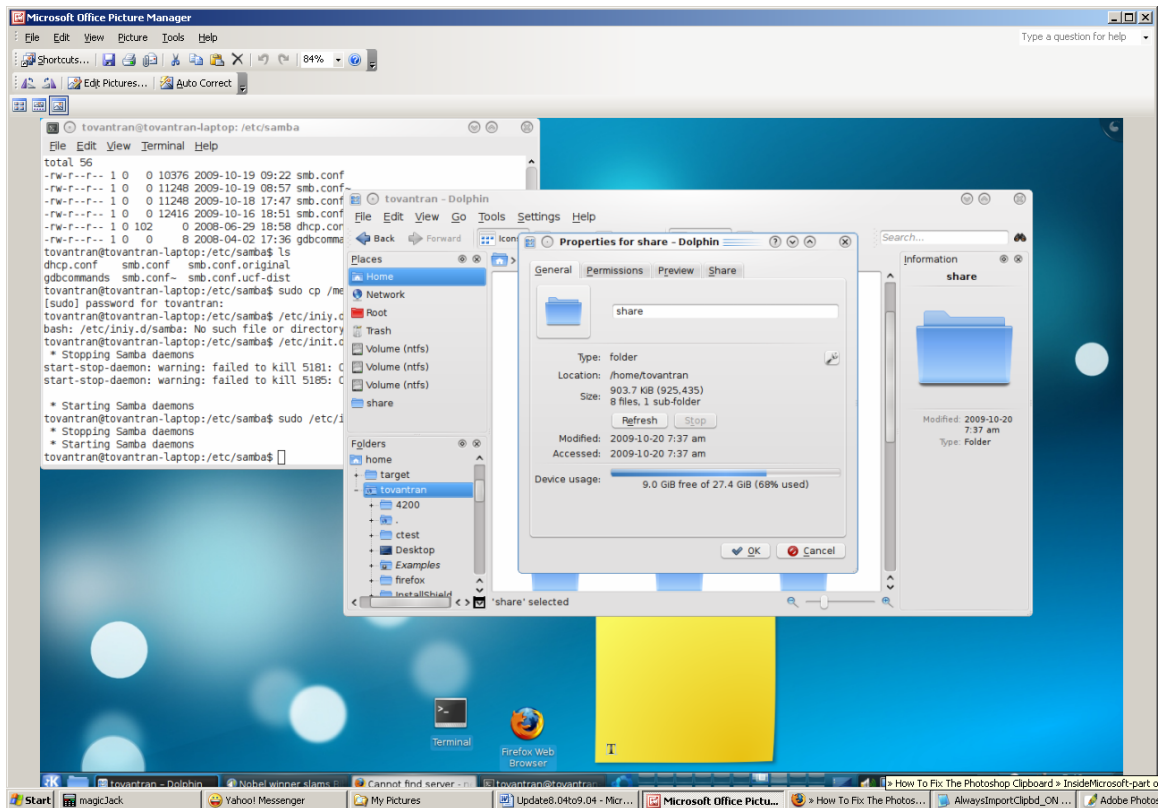
Using Dolphin: File manager - Places

Create share dir (mouse right) in /home/user.../share

Over Share Folder -> right button->properties->share->password->add shared folder then

-> Simple share

then under tab permissions-> set owner group and others -> to view or modify



Ubuntu/Linux to see Windows

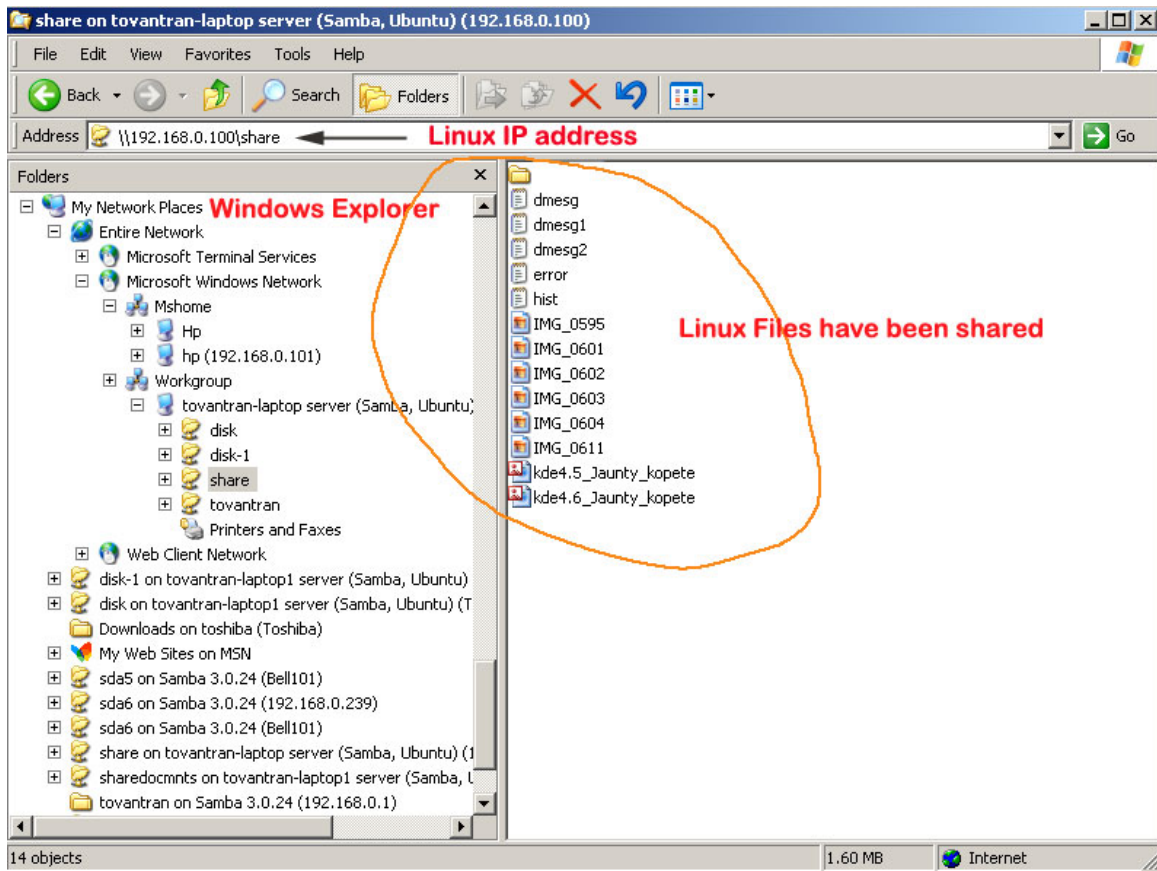
Using Dolphin: File manager

Place the mount on top of all folder to type this is how the format works
 smb://users@192.168.0.102/ (of Windows) or smb://192.168.0.102
 (users of windows could be administrator, guest...)

Windows XP:

C:\ net view or net share (show files have been shared in XP)
 My network places ->Entire Network->Microsoft Windows Network
 or [\\192.168.0.100](http://192.168.0.100) (of Linux)
 Share

Want linux to see Windows need to share that folder right click then share



3. How to remove GRUB and restore the Windows bootloader

<http://saysprasad.wordpress.com/2008/07/15/how-to-remove-grub-and-restore-the-windows-bootloader/>

<http://www.linuxforums.org/forum/installation/94066-solved-need-fix-mbr.html>

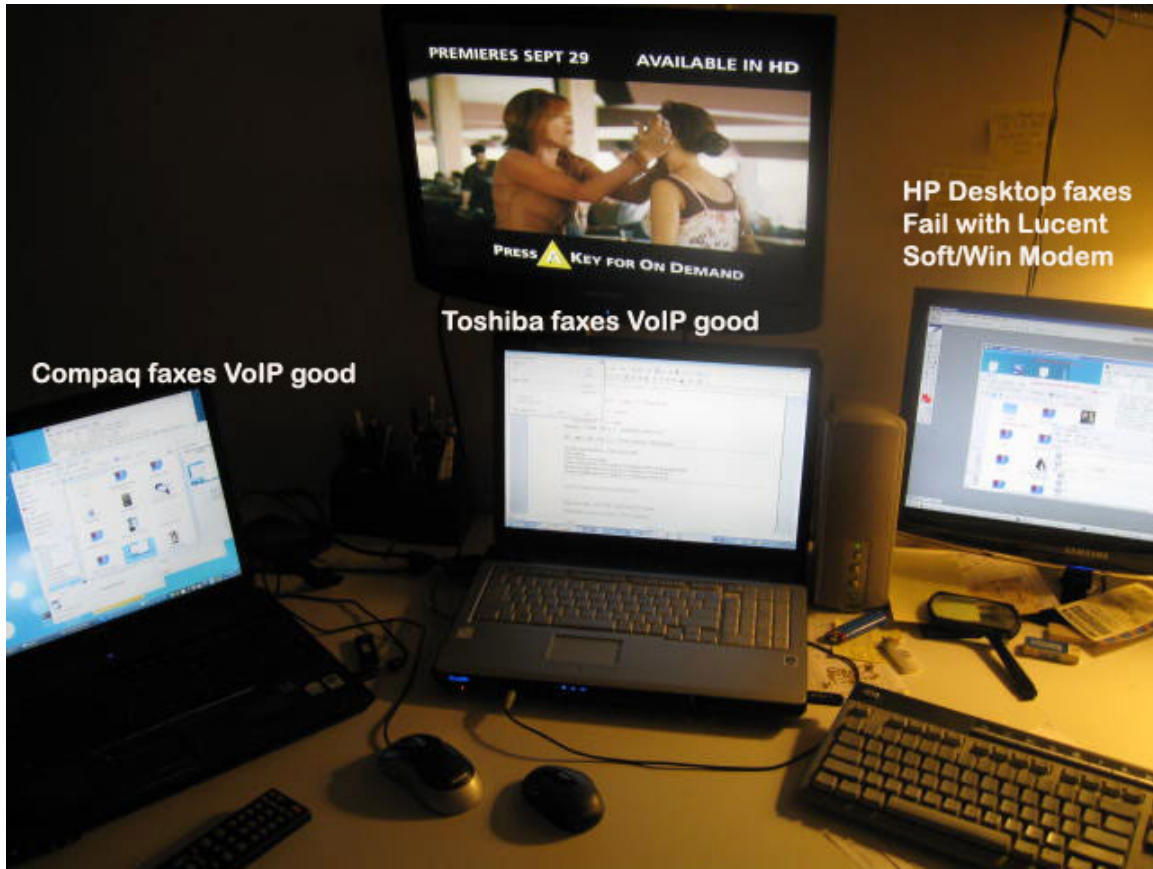
Remove linux from dual boot loader from XP. Using CD XP load and choose R option select system usually 1: windows then enter 2 commands from DOS:

C:\> cd \ then enter 2 commands:

```
bootrec.exe /fixmbr  
bootrec.exe /fixboot
```

4. Fax over IP (like VoIP)





Send Fax from HP Fax Machine Fail
 Send Fax from HP with modem/fax Desktop Fail
 Send Fax from Compaq with modem/fax Laptop Pass/Ok
 Send Fax from Toshiba with modem/fax Laptop Pass/Ok

Using WinFax Pro version 10

Open Fax Manager -> Send Fax -> Insert -> Fax Page -> Send

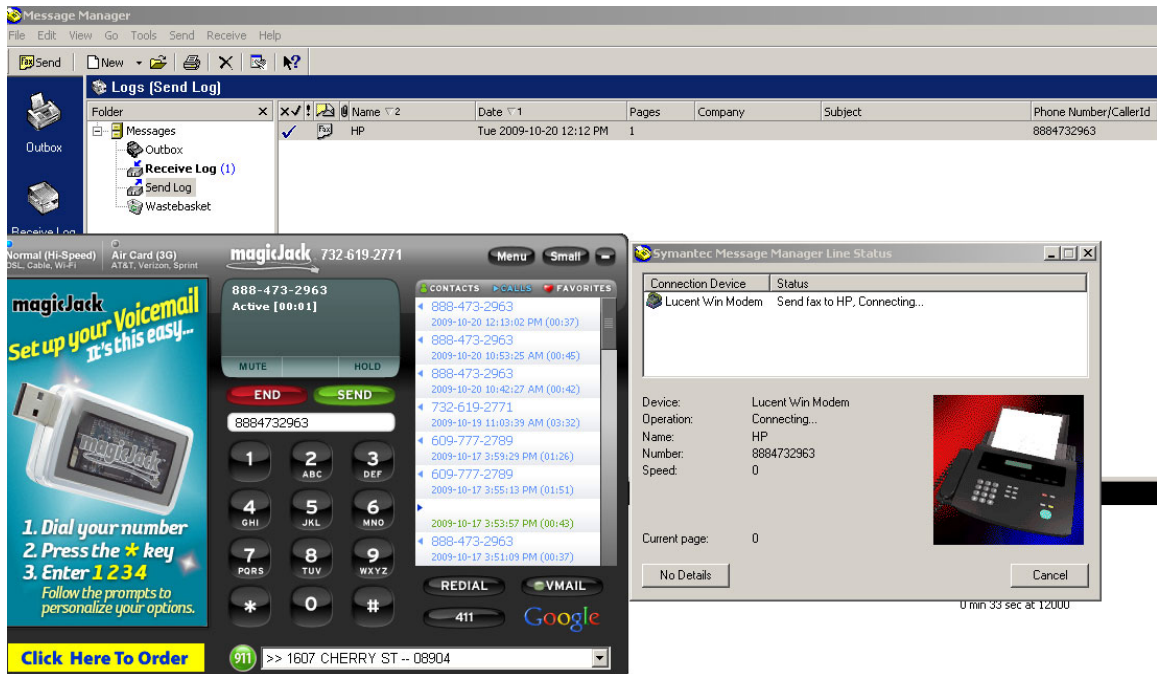
When dialing Fax Machine or Modem to Phone Adapter modem dials as a normal voice call. I think it depends on manufacture modem all the parameters are correct but Lucent Win Modem and Fax Machine all are made from HP.

Querying Modem: Lucent Win Modem from HP Desktop

```
COM3  Modem Support Fax Data Voice
      Max Fax Transmit 14400 bps
      Max Fax Receive  14400 bps
```

Fax Class: Class 1

HP Fax Test Number: 888-473-2963



5. Wire and Wireless

Make sure Wireless switch is ON

If you have wire and wireless interface in windows, the system will run on wire interface. Wire will have more priority than wireless.



In linux if you have wire and wireless in the system it will enable wire then wireless will be disabled and vice versa. As you can see in the network manager by starting **wicd-client -n &**


```

# Single key 128bit WEP
network={
    ssid="dlink"
    key_mgmt=NONE
#   wep_key0=ABCDEF01234567890123456789
    wep_key0=ABABABABABABABABABABABABAB
    wep_tx_keyidx=0
    priority=5
}

# WPA-PSK
network={
    ssid="dlink"
    proto=WPA
    key_mgmt=WPA-PSK
    pairwise=TKIP
    psk="your passphrase"
    priority=4
}

```

create a file called /etc/default/wpa_supplicant, add entry ENABLED=0 and save the file

```
# /etc/default/wpa_supplicant
```

```
# WARNING! Make sure you have a configuration file!
```

```
#ENABLED=1
```

```
ENABLED=0
```

```
# Useful flags:
```

```

# -D <driver>           Wireless Driver
# -i <ifname>           Interface (required, unless specified in
config)
# -c <config file>     Configuration file
# -d                   Debugging (-dd for more)
# -w                   Wait for interface to come up

```

```
# OPTIONS="-w"
```

- **Procedure to connect a wireless in Linux Ubuntu**

WEP Connection:

Either use dhclient or dhcpcd

```

sudo ifconfig <interface> down
sudo dhclient -r <interface>
sudo ifconfig <interface> up
sudo iwconfig <interface> essid "ESSID_IN_QUOTES"
sudo iwconfig <interface> key ABABABABABABABABA...
sudo iwconfig <interface> mode Managed
sudo dhclient -r <interface>
sudo dhclient <interface>

```

```
(iwconfig wlan0 ESSID BELL654 mode Managed key
16:15:80:31:86:68:56:39:88:63:78:48:20)
```

```
/etc/samba$ sudo dhclient eth0
Internet Systems Consortium DHCP Client V3.1.1
Copyright 2004-2008 Internet Systems Consortium.
All rights reserved.
For info, please visit http://www.isc.org/sw/dhcp/
```

```
wifi0: unknown hardware address type 801
wifi0: unknown hardware address type 801
Listening on LPF/eth0/00:1e:ec:24:ce:3e
Sending on LPF/eth0/00:1e:ec:24:ce:3e
Sending on Socket/fallback
DHCPDISCOVER on eth0 to 255.255.255.255 port 67 interval 7
DHCP OFFER of 192.168.0.100 from 192.168.0.1
DHCPREQUEST of 192.168.0.100 on eth0 to 255.255.255.255 port 67
DHCPACK of 192.168.0.100 from 192.168.0.1
* Reloading /etc/samba/smb.conf smbd only
...done.
bound to 192.168.0.100 -- renewal in 28186275 seconds.
```

```
sudo ifconfig ath0 up
sudo iwlist ath0 scan
sudo iwconfig ath0 essid (network code) key (WEP key, only needed if
it's WEP encrypted)
sudo dhcpcd ath0 (dhclient)
ping google.com
```

```
sudo dhcpcd eth0
dhcpcd.sh: interface eth0 has been configured with new IP:192.168.0.100
```

- **Verify ifconfig & iwconfig**

```
$ ifconfig
ath0      Link encap:Ethernet  HWaddr 00:1f:3a:6d:a4:f5
          inet addr:192.168.0.104 Bcast:192.168.0.255
Mask:255.255.255.0
          UP BROADCAST RUNNING MULTICAST  MTU:1500  Metric:1
          RX packets:9334 errors:0 dropped:0 overruns:0 frame:0
          TX packets:6956 errors:0 dropped:0 overruns:0 carrier:0
          collisions:0 txqueuelen:0
          RX bytes:8619436 (8.6 MB)  TX bytes:1313573 (1.3 MB)

eth0      Link encap:Ethernet  HWaddr 00:1e:ec:24:ce:3e
          UP BROADCAST RUNNING MULTICAST  MTU:1500  Metric:1
          RX packets:31565 errors:0 dropped:0 overruns:0 frame:0
          TX packets:25752 errors:0 dropped:0 overruns:0 carrier:0
          collisions:0 txqueuelen:1000
          RX bytes:33546660 (33.5 MB)  TX bytes:3145979 (3.1 MB)
          Interrupt:20 Base address:0x1000

lo        Link encap:Local Loopback
          inet addr:127.0.0.1  Mask:255.0.0.0
          UP LOOPBACK RUNNING  MTU:16436  Metric:1
          RX packets:159 errors:0 dropped:0 overruns:0 frame:0
```

```

TX packets:159 errors:0 dropped:0 overruns:0 carrier:0
collisions:0 txqueuelen:0
RX bytes:13035 (13.0 KB) TX bytes:13035 (13.0 KB)

wifi0 Link encap:UNSPEC HWaddr 00-1F-3A-6D-A4-F5-00-00-00-00-00-00-00-00-00-00-00
UP BROADCAST RUNNING MULTICAST MTU:1500 Metric:1
RX packets:618919 errors:0 dropped:0 overruns:0 frame:14828
TX packets:10839 errors:1 dropped:0 overruns:0 carrier:0
collisions:0 txqueuelen:199
RX bytes:139204355 (139.2 MB) TX bytes:1719013 (1.7 MB)
Interrupt:20

$ iwconfig
lo no wireless extensions.

eth0 no wireless extensions.

wifi0 no wireless extensions.

ath0 IEEE 802.11g ESSID:"dlink" Nickname:""
Mode:Managed Frequency:2.412 GHz Access Point:
00:22:B0:D3:A1:30
Bit Rate:6 Mb/s Tx-Power:16 dBm Sensitivity=1/1
Retry:off RTS thr:off Fragment thr:off
Power Management:off
Link Quality=65/70 Signal level=-31 dBm Noise level=-96 dBm
Rx invalid nwid:202965 Rx invalid crypt:0 Rx invalid frag:0
Tx excessive retries:0 Invalid misc:0 Missed beacon:0

pan0 no wireless extensions.

```

- **Reboot or reset the interface**

Reboot your system or use the following command
sudo /etc/init.d/dbus restart

6. The Ubuntu 9.04 Intel Graphics Fiasco

<http://www.workswithu.com/2009/05/06/the-ubuntu-904-intel-graphics-fiasco/>

- **Reverting the Jaunty Xorg intel driver to 2.4**

<https://wiki.ubuntu.com/ReinhardTartler/X/RevertingIntelDriverTo2.4>

Add the following lines to your `/etc/apt/sources.list`:

```

deb http://ppa.launchpad.net/siretart/ppa/ubuntu jaunty main
deb-src http://ppa.launchpad.net/siretart/ppa/ubuntu jaunty main

```

Import the appropriate GPG key:
sudo apt-key adv --recv-keys --keyserver keyserver.ubuntu.com 0xce90d8983e731f79

See

<https://help.launchpad.net/Packaging/PPA#Adding%20a%20PPA%20to%20your%20Ubuntu%20repositories> for additional information how to add GPG keys to your system.

Install the driver:

```
$ sudo apt-get update
$ sudo apt-get install xserver-xorg-video-intel-2.4
```

Now you *should* be set. Restart X by running "sudo /etc/init.d/gdm restart" in a terminal and see if the graphics performance from intrepid is restored.

Do I need to change my xorg.conf file? ==> May not work. Situation not improved without xorg.conf change??

If the driver does not work for you, or is not better, you should rollback to the original Ubuntu one. Remove the two lines from /etc/apt/sources.list again, and install the original one again:

```
$ sudo apt-get install xserver-xorg-video-intel
```

7. Display Power Management Signaling.

<http://ubuntuforums.org/showthread.php?t=1216041>

```
xset -dpms
```

This turns off DPMS (Display Power Management Signaling).

If it works during your current session, you can make it permanent by adding this command to the list of commands run when you begin a GNOME session. You do that by clicking System>Pref>Sessions. (Can not find it in KDE 4.3)

You can go to System > Preferences > Screensaver then click on Power Management and put "Put display to sleep when inactive for" to Never. I think that should do it.

<http://ubuntuforums.org/showthread.php?t=788276>

- Installed Boot Up Manager
sudo apt-get install bum
- De-select the following services
 - * powernowd
 - * apmd
 - * acpi-support
 - * acpid

Disable Gnome-Power-Manager from starting up when you boot into gnome.

System->Preferences->Sessions (Can not find)

- Solution: it seems working just with Option "DPMS" "false"

```
Add xset -dpms in /home/.../.bashrc
```

```
/etc/x11/xorg.conf add
```

```
Section "Monitor"
```

```
#other options can go here
```

```
Option "DPMS" "false"
```

```
EndSection
```

8. Virus Trojan Neprodoor!inf

<http://en.kioskea.net/forum/affich-86872-code-39-error-on-network-cards-due-to-virus>

Install CD XP enter and Repair will work but as soon as reset the virus comes back and yellow circle and black exclamation mark.

1. Disable restore control->system-> system restore ->check turn off system restore
2. Most viruses these days infect the c:\windows\system32\drivers\ndis.sys file! the file is usually removed by your virus scanner. **JUST REPLACE THE NDIS.SYS FILE WITH A CLEAN ONE FROM ANOTHER MACHINE INTO THE C:\WINDOWS\SYSTEM32\DRIVERS FOLDER AND IT WILL WORK FINE AFTER A REBOOT. ALL YELLOW EXCLAMATION MARKS JUST DISAPPEAR. I HAVE HAD TO DO THIS MANY TIMES!!!**

This is why happened my virus scanner removed ndis.sys when it infected it leaves the system without ndis wrapper for the 1394 Net Adapter device drivers. So the windows will fail to load the 1394 Ethernet, all the internet connections fail because Ethernet driver fails to load due to the missing this ndis.sys

3. Norton Antivirus scan and delete it may take a few times